



Services Available

• Service given at a facility



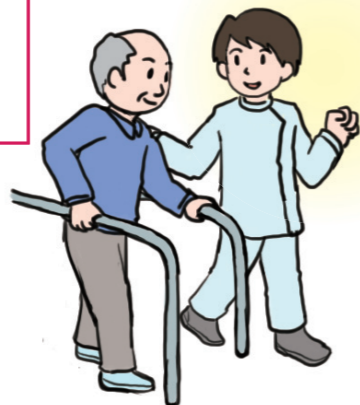
* This is a community-oriented service, so it is available only to the residents of the municipality where the service provider or facility concerned is based.

Service given at a facility

Health service facility for the elderly requiring long-term care

This facility provides for users who left hospital rehabilitation in order to assist them in being able to independently handle everyday challenges.

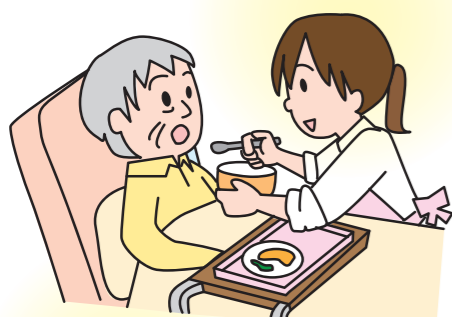
Only those certified as long-term care need level of 1, 2, 3, 4, or 5 can utilize this service.



Social welfare facility for the elderly requiring long-term care (special nursing home for the elderly)

Users who need continuous care and have difficulty in their life at home instead stay at this facility. This facility provides assistance with meals, excretion and daily chores.

Only those certified as long-term care need level of 1, 2, 3, 4, or 5 can use this service.



Community-oriented social welfare facility for the elderly requiring care* (special nursing home for the elderly)

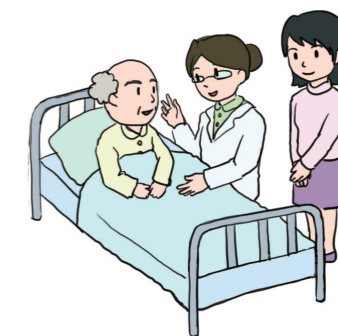
Users who need continuous care and have difficulty in their life at home instead stay at a small-scale special nursing home for the elderly. Capacity is 30 or less. This facility provides assistance with meals, excretion, and daily chores.

Only those certified as long-term care need level of 1, 2, 3, 4, or 5 can use this service.

Sanatorium type healthcare facility for the elderly requiring long-term care

This facility takes in those in need of daily medical care for a relatively long period of time, or for rehabilitation during a chronic period and long-term care.

Only those certified as long-term care need level of 1, 2, 3, 4, or 5 can use this service.



Daily-life group care for the elderly with dementia*

(group home for the elderly with dementia) Five to nine people with dementia receive care, including for daily life activities, while leading group life in a homey atmosphere.

Those certified as support need level of 1 cannot use this service.



Daily-life care service in specified facilities

Users receive care while living in a fee-charging home for the elderly, low charge home for the elderly, etc. Users can also use "External service usable specified facilities". These facilities outsource a certain amount of services to other companies, and users can use other care services.

Community-oriented daily-life care services in live-in facilities*

Users receive care living at a small-scale (maximum capacity of 30) paid community-based home for the elderly or low charge home for the elderly. Only those certified as long-care need or their spouses are eligible for these facilities ("specialized nursing care facilities"), while only those requiring care can access long-term care services.

Only those certified as long-term care need level of 1, 2, 3, 4, or 5 can use this service.

