



Community Support Service



1 Community Support Service

The Community Support Service aims to prevent long-term care need (support need) for the elderly, and even if a person already requires long-term care, provides support to enable independent daily life as much as possible. This service is provided by municipalities.

【Community Support Service Description】

① Long-term Care Need Prevention and Comprehensive Daily Living Support Program	→See the next page.
② Comprehensive Support Service	This service operates the Comprehensive Community Support Center. →See “2. Comprehensive Community Support Center.”
③ Voluntary Service	This service supports stable operation of the Long-term Care Insurance Service, and independent daily lives of elderly the community.

All municipalities implement ①, but the timing of the start of the service will be anywhere between FY2015 and FY2017, depending on the each municipality. Citizens of municipalities that have not launched the service can utilize previous long-term care need prevention services.

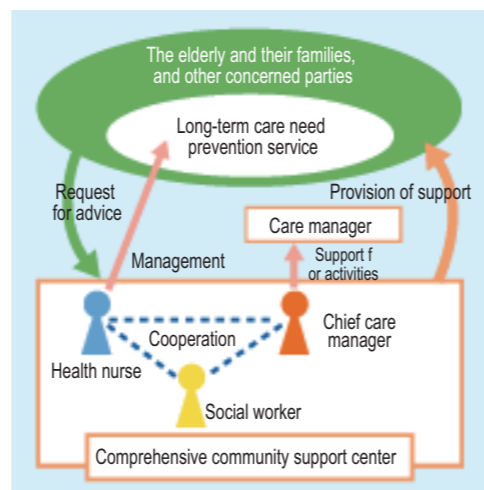
② is provided by all municipalities .

③ is not provided by the municipality in some cases.

2 Comprehensive community support center

To assist the elderly in continuing to live in communities that have grown familiar to them, it is necessary to provide not only an insurance system, but comprehensive care which integrates various community resources: specialists in the field of health and medical support and social welfare work, volunteers, etc.

Municipalities set up Comprehensive Community Support Centers, where they assign staff such as chief care managers, health nurses, and social workers. They use their expert knowledge and skills together to provide comprehensive support to elderly and their families, etc.



【Comprehensive Community Support Center Description】

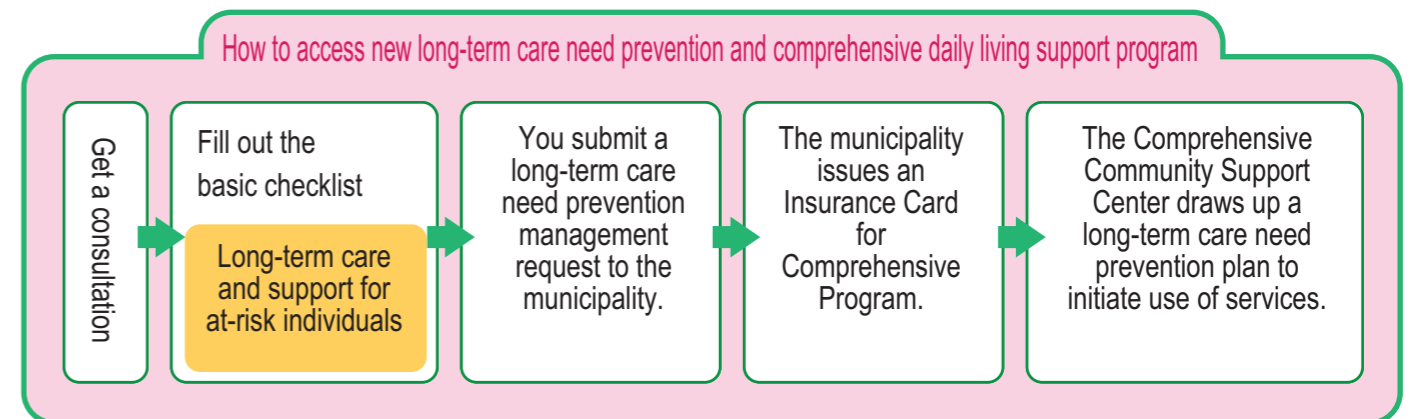
① Care Management for Long-term Care Need Prevention, etc.	To set up a care plan considering the motivation and the ability of the user for the purpose of effectively carrying out long-term care need prevention service.
② General consultation and guidance	To build a network with related people in the community, offer consultation to the elderly and their families, and help them to receive proper services using appropriate systems and local resources.
③ Protection of rights	To function as an information counter for protection of rights and abuse prevention to the elderly through introducing adult guardianship, identifying elder abuse in its early stage, or dealing with consumer issues in order that the elderly live with dignity.
④ Comprehensive and continuous care management	To support care manager and coordinate care manager and other medical facilities so that the elderly can receive appropriate services for their mental and health condition in a continuous way.

① can be offered in some cases not only by comprehensive community support centers but also directly by municipalities.

3 Long-term Care Need Prevention and Comprehensive Daily Living Support Program

As of April 27, 2015, a new system of long-term care need prevention and comprehensive daily living support program has been launched (referred to below as “Comprehensive Program”). The purpose of Comprehensive Program is to provide a wide variety of services led by local residents and other parties to meet the needs of each municipality and encourage people in communities to support each other. The goal is to establish a highly efficient, highly effective support system for those certified as support need and others.

(Depending on the municipality, the program will begin sometime between FY2015 and FY2017.)



New long-term care need prevention and comprehensive daily living support program

■ Long-term care need prevention and living support service program

To meet the diverse living support needs including of those certified as support need visiting services, this program offers a myriad of services including resident-led support, in addition to services such as visiting care for long-term care prevention and day care for long-term care prevention.

※ Those certified as support need and who meet the checklist criteria.

- ① Visiting type services**
This service is intended to replace previous visiting care for long-term care prevention. Certified caregivers visit homes and offer supports for long-term care prevention, in addition to NPOs and resident-led organizations offering a variety of daily living support services.
- ② Day services**
This service is intended to replace previous day care for long-term care prevention. In addition to functional training provided by day service centers, NPOs and resident-led organization also offer community venue events..
- ③ Other living support services**
This array of services is designed to meet the needs of the community, including food deliveries, checking in on the elderly, community salons, and ore.

■ General long-term care need prevention program

Anyone 65 years of age or older can participate. This program is designed to foster community-building by bringing people together at community venues, salons, etc.

- ① Long-term care need prevention and awareness program**
Users can participate in exercise classes, lectures, etc. organized by the municipalities. Pamphlets are also distributed to help spread the word about preventing the need for long-term care.
- ② Community long-term care need prevention and support program**
These resident-led programs provide education and support on long-term care need prevention at community venues, salons, and more.
- ③ Local rehabilitation support projects**
Rehabilitation specialists are sent to resident-led community venues.