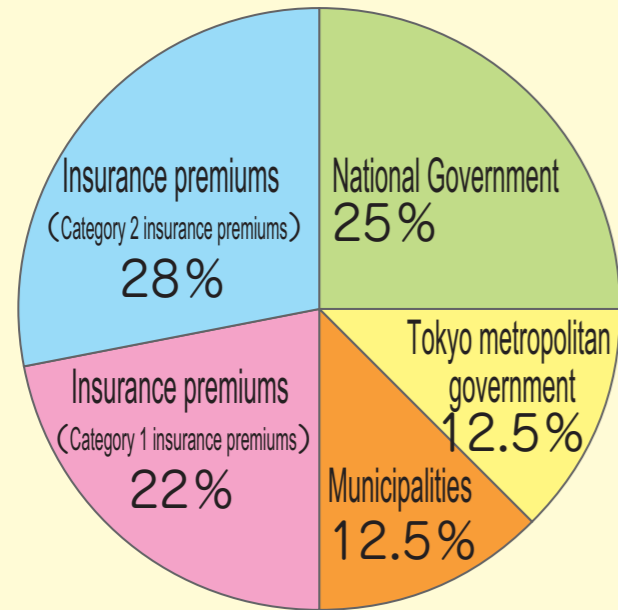




## 3 Financial resources of long-term care insurance

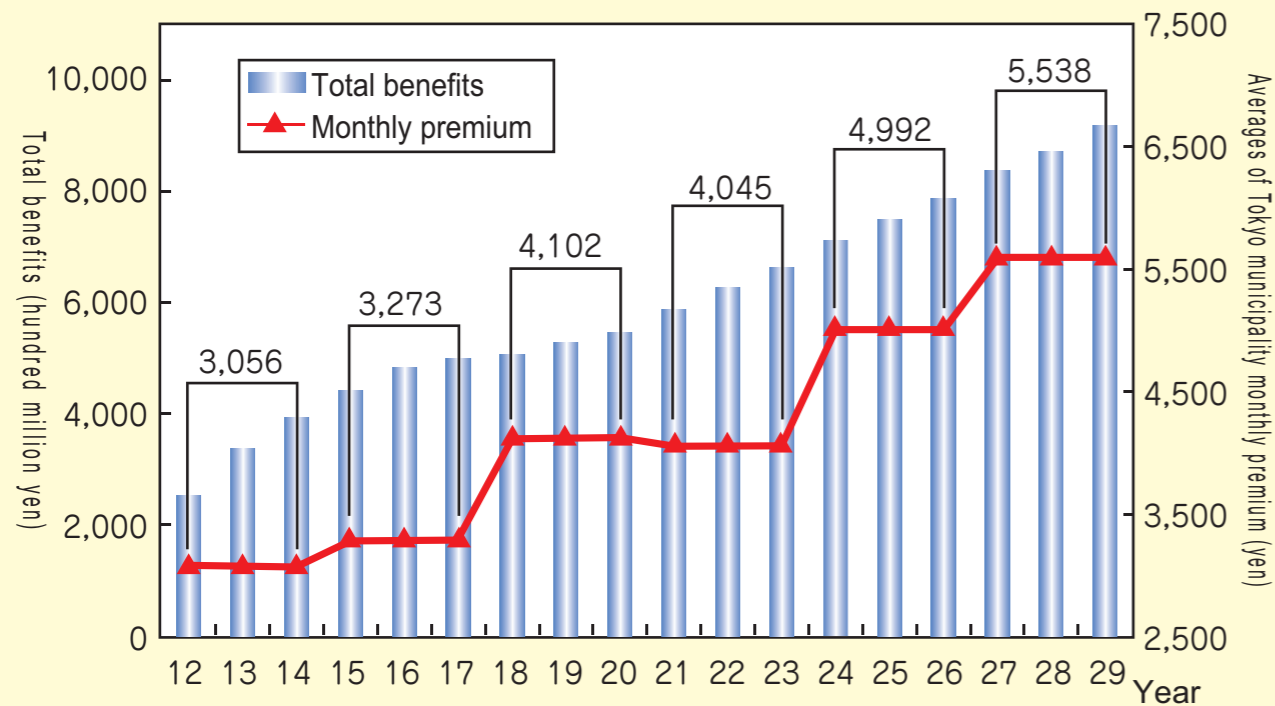


※ The chart to the left shows how financial resources of home care service such as visiting care are distributed.

The national government provides 20%, and the Tokyo metropolitan government provides 17.5% of benefits for long-term care facilities and specified facilities.

※ Since 5% of the total cost shared by the national government is applied as a financial adjustment subsidy, and is distributed according to the financial situation of the users, the percentage municipalities share can vary.

## 4 Trends in total long-term care benefits growth and premiums



※ Source: Tokyo Elderly Health and Welfare Plan (Fiscal 2015 to 2017)  
 ※ Monthly payment is based on standard premium of each municipality.

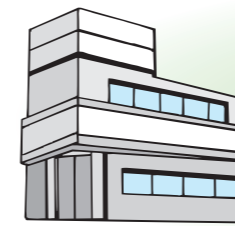


- When using a long-term care insurance system, users should use services with a company that best suits him/her. If you cannot decide which services and which service provider you should utilize, consult the municipality or a Comprehensive Community Support Center.
- If you have your own personal care manager, choose necessary services under his/her supervision.
- Under the “Long-term Care Information Publication System,” users are able to compare different providers and select one that appeals to them.

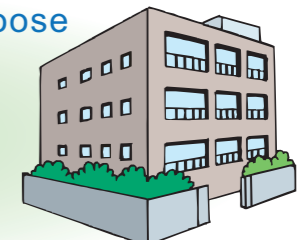
## Long-term Care Information Publication System

You can easily find information about the services and their service provider’s organization on the internet. In the future, information on care providers well as comprehensive community support centers run by the municipalities will be added to the information available.

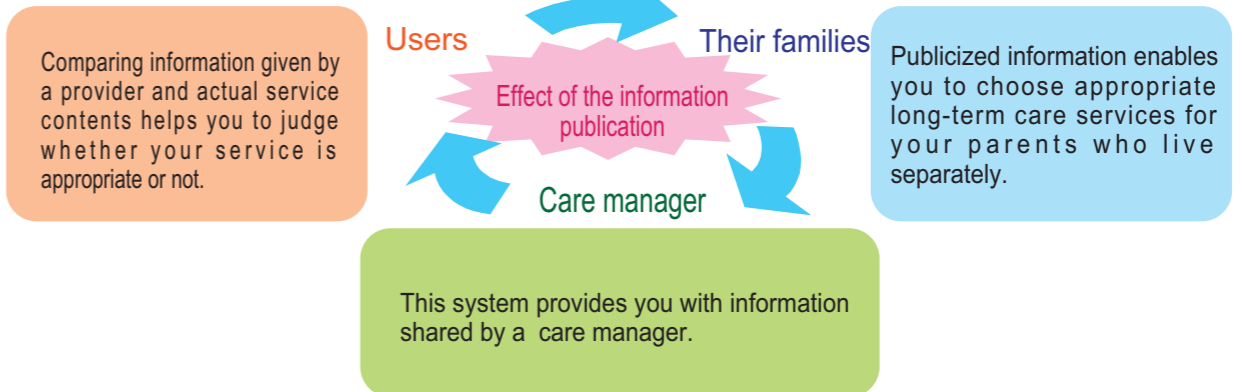
Compare publicized information and choose the best service provider for you.



A. Service provider



B. Service provider



## Evaluation conducted by Assigned Evaluation Institution

Evaluation institutions assigned by the Tokyo Metropolitan Government conduct evaluations on services and organizational operations of various providers, and ask users to confirm their actual needs. Those results are publicized in the internet. You can see features of service providers and how they are improving their services.

Choosing appropriate providers that take steps to try to improve services—such as these evaluation—leads to the improvement of the long-term care service.

Check “Tokyo Fukushi Navigation” <http://www.fukunavi.or.jp>   for Long-term Care Information Publication System and these evaluation .